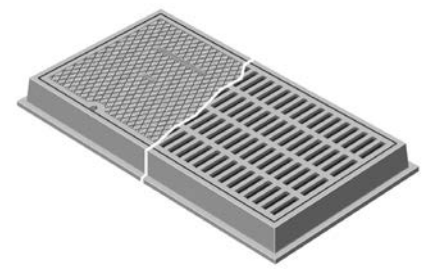
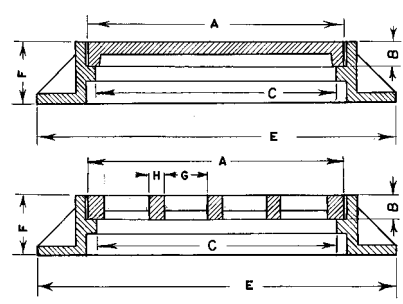


■ Note: When specifying/ordering grates, refer to "Choosing the Proper Inlet Grate" on pages 125-126.  
For a complete listing of FREE OPEN AREAS and WEIR PERIMETERS of all NEENAH grates, refer to pages 327-332.

## R-1879 Series Frame, Solid Lid/Grate

### Light Duty

CATALOG NUMBER	GRATE TYPE	SQ. FT. OPEN	WEIR PERIMETER LINEAL FEET
R-1879-A1G	A or C	0.4	4.6
R-1879-A2G	A or C	0.8	6.0
R-1879-A3G	A or C	1.2	6.7
R-1879-A4G	A or C	1.4	7.3
R-1879-A5G	A or C	1.9	7.8
R-1879-A6G	A or C	2.0	8.6
R-1879-A7G	A or C	1.7	9.2
R-1879-A8G	A or C	2.2	9.8
R-1879-A9G	A or C	2.8	10.6
R-1879-A10G	A or C	3.7	12.3
R-1879-B1G	A	0.6	5.7
R-1879-B2G	C	0.9	6.5
R-1879-B3G	C	1.0	7.5
R-1879-B4G	A	1.4	8.5
R-1879-B5G	A	1.9	9.6
R-1879-B6G	A	2.4	9.5
R-1879-B7G	A	3.0	10.6
R-1879-B8G	A	3.2	12.6
R-1879-B9G	A	3.2	11.6
R-1879-B10G	C	4.2	13.5



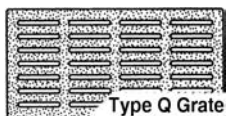
These shallow frames are suitable for use in thin or deep concrete slabs. All sizes of frames are reversible and can be installed with flange at base or top.

For additional selections, see **R-6672-3 Series**.

Dimensions in inches

Catalog No. Solid Lid	Catalog No. Open Grate	A	B	C	E	F	G	H
<b>Square</b>								
R-1879-A1L	R-1879-A1G ***	13 3/4 x 13 3/4	1 1/2	12 x 12	18 x 18	4	1 x 3	1
R-1879-A2L	R-1879-A2G	18 x 18	1 1/2	16 x 16	22 x 22	4	1 1/4 x 4 1/4	3/4
R-1879-A3L	R-1879-A3G	20 x 20	1 1/2	18 x 18	24 x 24	4	3/4 x 5	3/4
R-1879-A4L	R-1879-A4G	21 1/2 x 21 1/2	1 1/2	20 x 20	26 x 26	4	3/4 x 4	3/4
R-1879-A5L	R-1879-A5G	23 1/2 x 23 1/2	1 1/2	22 x 22	28 x 28	4	3/4 x 6 1/2	3/4
R-1879-A6L	R-1879-A6G **	25 3/4 x 25 3/4	1 1/2	24 x 24	30 x 30	4	1 x 5	3/4
R-1879-A7L	R-1879-A7G	27 1/2 x 27 1/2	1 1/2	26 x 26	32 x 32	4	3/4 x 7 5/8	3/4
R-1879-A8L	R-1879-A8G	29 1/2 x 29 1/2	1 1/2	28 x 28	34 x 34	4	1 1/8 x 5 7/16	1
R-1879-A9L	R-1879-A9G **	31 3/4 x 31 3/4	1 1/2	30 x 30	36 x 36	4	1 x 4 1/4	3/4
R-1879-A10L *	R-1879-A10G *	37 x 37	1 1/2	36 x 36	42 x 42	4	1 x 4 7/8	1
<b>Rectangular</b>								
R-1879-B1L	R-1879-B1G	14 x 20	1 1/2	12 x 18	18 x 24	4	3/4 x 5 1/2	1
R-1879-B2L	R-1879-B2G	13 1/2 x 25 1/2	1 1/2	12 x 24	18 x 30	4	3/4 x 4 1/2	1
R-1879-B3L	R-1879-B3G	19 1/2 x 25 1/2	1 1/2	18 x 24	24 x 30	4	7/8 x 5 1/4	1
R-1879-B4L	R-1879-B4G	19 1/2 x 31 1/2	1 1/2	18 x 30	24 x 36	4	3/4 x 5	1
R-1879-B5L	R-1879-B5G	19 3/4 x 37 3/4	1 1/2	18 x 36	24 x 42	4	1 1/8 x 5	1
R-1879-B6L	R-1879-B6G	25 1/2 x 31 1/2	1 1/2	24 x 30	30 x 36	4	1 x 5 1/8	3/4
R-1879-B7L	R-1879-B7G	25 1/2 x 37 1/2	1 1/2	24 x 36	30 x 42	4	1 x 5 1/8	3/4
R-1879-B8L *	R-1879-B8G *	25 3/4 x 49 3/4	1 1/2	24 x 48	30 x 54	4	3/4 x 5 1/8	1
R-1879-B9L *	R-1879-B9G *	31 3/4 x 37 3/4	1 1/2	30 x 36	36 x 42	4	1 x 6 1/2	1
R-1879-B10L *	R-1879-B10G *	31 1/2 x 49 1/2	1 1/2	30 x 48	36 x 54	4	1 x 5	1

\* Cover/Grate in 2 pieces  
\*\* Type Q Grate available, 1/2" wide grate slots.  
\*\*\* Type Q Grate available, 3/8" wide grate slots.



Supplied By:

**TRENCHDRAIN SUPPLY** 877-903-7246  
www.trenchdrainsupply.com

CLICK HERE to return to the Table of Contents

